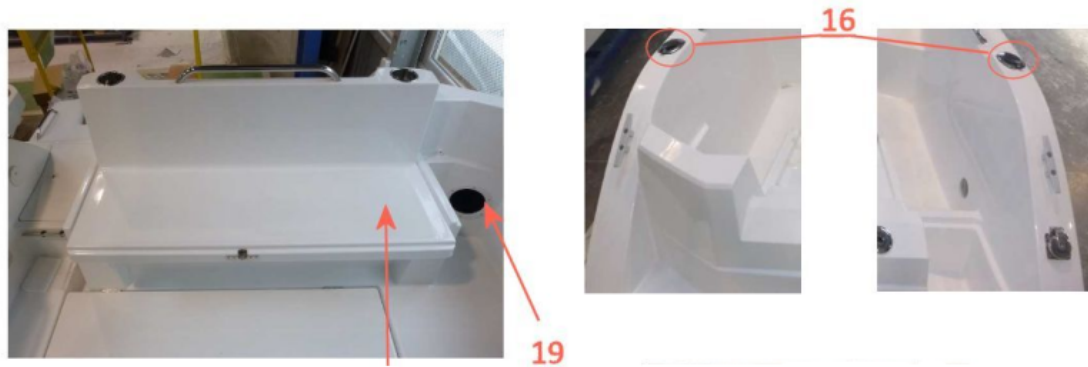
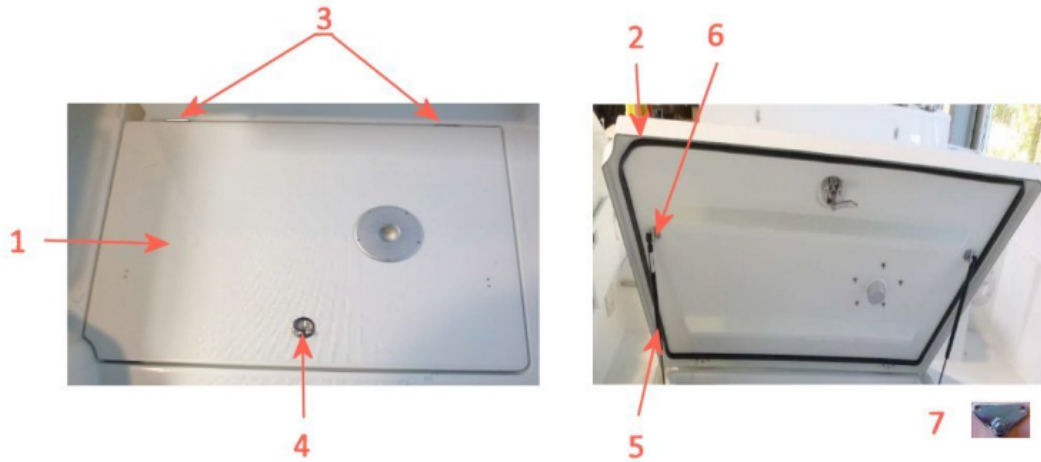
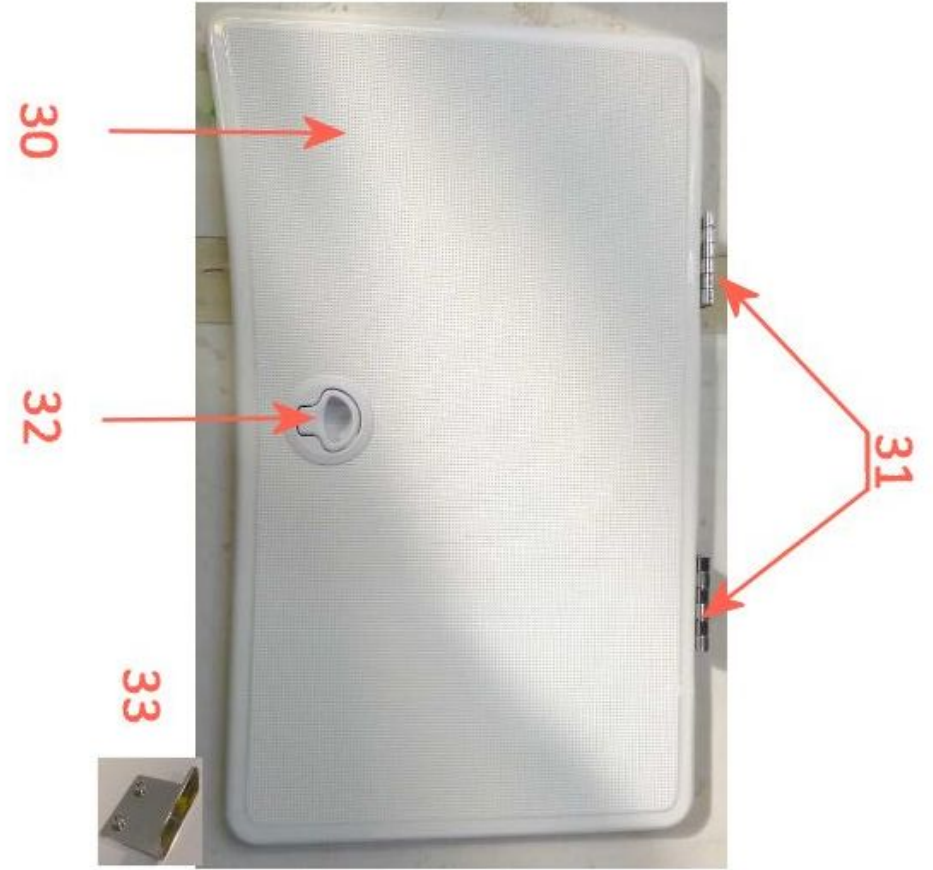
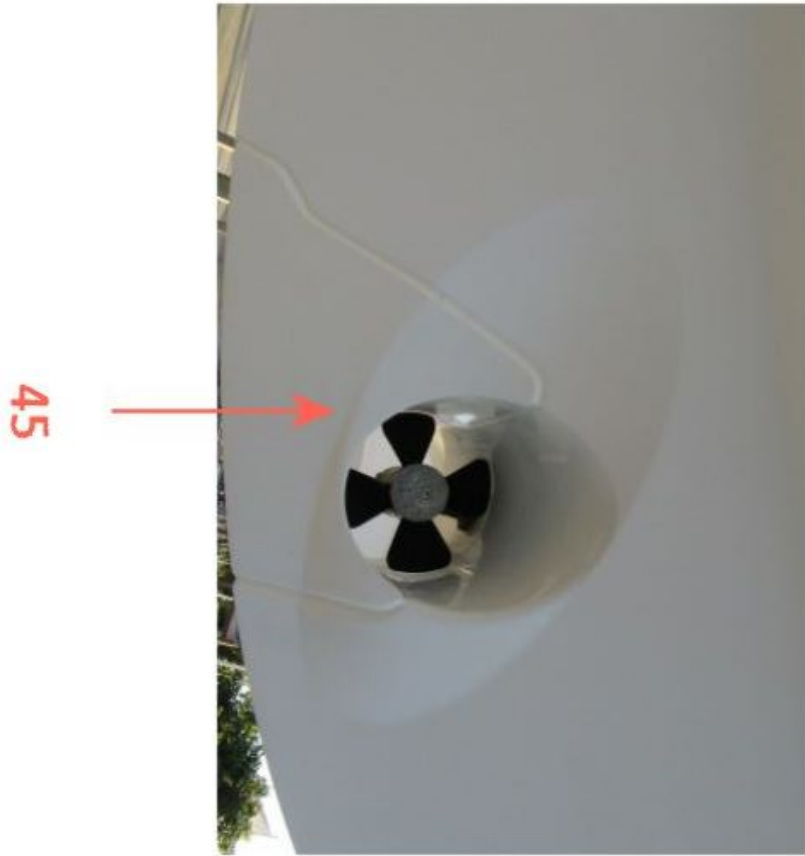


EXTERIOR EQUIPMENT DECK HULL



EXTERIOR EQUIPMENT DECK HULL



EXTERIOR EQUIPMENT DECK HULL

option	Pos.	Part No.	Description	Quant. per boat	Version / Option	SS_FAM	Beginning hull number	Ending hull number
	1	998780	RTM AT8SA COCPIT COVER	1,000		EQUIPEMENT COQUE PONT		
	2	050672	RUBBER OMEGA PROFILE STICKY 11X18	4,400		EQUIPEMENT COQUE PONT		
	3	953899	HINGE CR BRASS 80X60	2,000		EQUIPEMENT COQUE PONT		
	4	068027	LATCH SS W KEY SOUTHCO WAT 02 12-35 88	1,000		EQUIPEMENT COQUE PONT		
	5	081488	GAS JACK 20KG	2,000		EQUIPEMENT COQUE PONT		
	6	120158	S/S JACK SUPPORT 90° PM STD NEW MODEL	2,000		EQUIPEMENT COQUE PONT		
	7	120160	S/S JACK SUPPORT 0° STD NEW MODEL	2,000		EQUIPEMENT COQUE PONT		
	8	998779	GRP AT8SA AFTBENCH	1,000		EQUIPEMENT COQUE PONT		
	9	401720	STARBOARD AT8SA AFT BENCH SUPPORT	1,000		EQUIPEMENT COQUE PONT		61
	9	402347	BENCH SUPPORT AT8SA STBD	1,000		EQUIPEMENT COQUE PONT	62	
	10	400447	SLIDING BENCH SUPPORT AT8SA INOX	2,000		EQUIPEMENT COQUE PONT		61
	10	992449	INOX TUBE SEAT MF6LA	4,000		EQUIPEMENT COQUE PONT	62	
	11	954668	PLASTIC HINGE FOR LEG OF SIT	2,000		EQUIPEMENT COQUE PONT		61
	11	057661	HINGE SS 080X75 POLISHED AM	4,000		EQUIPEMENT COQUE PONT	62	823
	11	213173	HINGE SS 080X75 POLISHED NM	4,000		EQUIPEMENT COQUE PONT	824	
	12	660000	LOCK-OFF SUPPORT 25	2,000		EQUIPEMENT COQUE PONT		61
	13	954692	NYLON LADDER END	2,000		EQUIPEMENT COQUE PONT		61
	14	066048	FASTENER PLASTIC GREY	1,000		EQUIPEMENT COQUE PONT		
	15	953932	SPRING BOLT AM	2,000		EQUIPEMENT COQUE PONT		706
	15	207630	SPRING BOLT LK PM NM	2,000		EQUIPEMENT COQUE PONT	707	
	16	014304	FISHING ROD SUPP D47 H190 FLUSH	2,000		EQUIPEMENT COQUE PONT		655
	17	953843	SLEEVE D.15	3,000		EQUIPEMENT COQUE PONT		
	18	940877	LATCH SUPPORT 90X32 WHITE (953932)	1,000		EQUIPEMENT COQUE PONT		
	19	976987	D200 INSPECTION COVER	1,000		EQUIPEMENT COQUE PONT		
	20	997393	DOOR SUPPORT MF6LA STARBOARD	1,000		EQUIPEMENT COQUE PONT		
	21	400445	AFT CLOSING AT8SA EL STAR	1,000		EQUIPEMENT COQUE PONT		

EXTERIOR EQUIPMENT DECK HULL

option	Pos.	Part No.	Description	Quant. per boat	Version / Option	SS_FAM	Begining hull number	Ending hull number
	22	176395	TELESCOPIC LADDER PLAST 10P AM	1,000		EQUIPEMENT COQUE PONT		7
	22	185495	TELESCOPIC LADDER PLAST 10P NM	1,000		EQUIPEMENT COQUE PONT	8	635
	22	176395	TELESCOPIC LADDER PLAST 10P AM	1,000		EQUIPEMENT COQUE PONT	636	658
	22	185495	TELESCOPIC LADDER PLAST 10P NM	1,000		EQUIPEMENT COQUE PONT	659	
	23	401480	SUPPORT FOR THE LADDER FO5MA	1,000		EQUIPEMENT COQUE PONT	27	89
	24	401481	STAR ELEMENT FO5MA SUPPORT LADDER	1,000		EQUIPEMENT COQUE PONT	27	89
	26	132400	ELASTIC CORDEND	1,000		EQUIPEMENT COQUE PONT		89
	27	953336	WHITE NYLON ROPE D04	1,400		EQUIPEMENT COQUE PONT		89
	28	954662	WHITE PLASTIC HOOK	1,000		EQUIPEMENT COQUE PONT		89
	29	694110	PADEYE FOR HY BEAN 137 CLEAT	1,000		EQUIPEMENT COQUE PONT		89
	30	998865	RTM COCPIT COVER AFT CHAMBER AT8SA	1,000		EQUIPEMENT COQUE PONT		
	31	905474	S/S HINGE 70X40 STDG	2,000		EQUIPEMENT COQUE PONT		
	32	039287	LATCH FLUSH-PULL WHITE	1,000		EQUIPEMENT COQUE PONT		
	33	944037	EQUERRE VERROUIL. TARGETTE	1,000		EQUIPEMENT COQUE PONT		
	34	131000	PLUG PLASTIC D50 COLORLESS	1,000		EQUIPEMENT COQUE PONT		
	35	949564	LATCH SUPPORT 40X35 WHITE	1,000		EQUIPEMENT COQUE PONT		
	36	400297	STARBOARD ELEMENT AFT SEAT AT8SA	1,000		EQUIPEMENT COQUE PONT		
	37	082157	HINGE OVAL 57X30 STDG	2,000		EQUIPEMENT COQUE PONT		
	38	955432	CHROMED SPRING LK BOLT 40X10MM	2,000		EQUIPEMENT COQUE PONT		89
	38	955432	CHROMED SPRING LK BOLT 40X10MM	1,000		EQUIPEMENT COQUE PONT	90	
	39	995003	STRAP FOR DOOR L150	1,000		EQUIPEMENT COQUE PONT		92
	40	955264	DUR CHISEL DBLE BALL	2,000		EQUIPEMENT COQUE PONT		
	41	386000	BIN LATCH 15X5	2,000		EQUIPEMENT COQUE PONT		45
	41	941333	INOX HOOK FOR CUSHION L52	2,000		EQUIPEMENT COQUE PONT	46	
	42	951331	GRP CORNER TRANSOM CC	1,000		EQUIPEMENT COQUE PONT		816
	42	951331	GRP CORNER TRANSOM CC	,500		EQUIPEMENT COQUE PONT	817	
	43	952049	HOLE PLUG FISHING ROD D50	2,000		EQUIPEMENT COQUE PONT		

