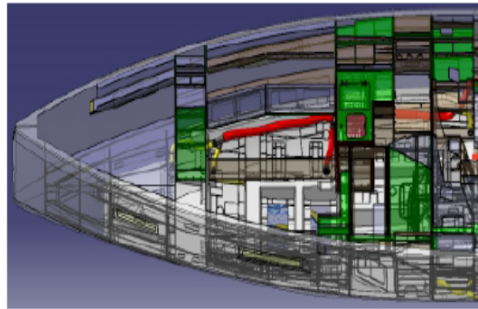


ENGINE ELECTRICAL UNITS



1



ENGINE ELECTRICAL UNITS

option	Pos.	Part No.	Description	Quant. per boat	Version / Option	SS_FAM	Beginning hull number	Ending hull number
	1	159773	TABL EL COUP BATT 12V VIATE	1,000		ELECT DEM SERV CHARGE		
	1	189868	MAST INVERTER 12 115V 60H 2000W MAST 2	1,000	12V REFRESH ER POWER SUPPLY AT	ELECT DEM SERV CHARGE		
	1	189026	MAST INVERTER 12 220	1,000	12V REFRESH ER POWER SUPPLY AT	ELECT DEM SERV CHARGE		
	1	189867	MAST INVERTER 12 230V 60H 2000W MAST 2	1,000	12V REFRESH ER POWER SUPPLY AT	ELECT DEM SERV CHARGE		
	2	954713	SMALL BRACKET TERMINAL	3,000		ELECT DEM SERV CHARGE		41
	2	142308	WINDLASS BREAKER 200A BSS	1,000	12V REFRESH ER POWER SUPPLY AT	ELECT DEM SERV CHARGE		
	2	142308	WINDLASS BREAKER 200A BSS	1,000	12V REFRESH ER POWER SUPPLY AT	ELECT DEM SERV CHARGE		
	2	142308	WINDLASS BREAKER 200A BSS	1,000	12V REFRESH ER POWER SUPPLY AT	ELECT DEM SERV CHARGE		
	3	158751	LABEL (C E) AVERTISSEMENT	1,000		ELECT DEM SERV CHARGE		
	3	125979	POWER SWITCH EXTENSION BLUESEA	1,000	12V REFRESH ER POWER SUPPLY AT	ELECT DEM SERV CHARGE		
	3	125979	POWER SWITCH EXTENSION BLUESEA	1,000	12V REFRESH ER POWER SUPPLY AT	ELECT DEM SERV CHARGE		

ENGINE ELECTRICAL UNITS

option	Pos.	Part No.	Description	Quant. per boat	Version / Option	SS_FAM	Begining hull number	Ending hull number
	3	125979	POWER SWITCH EXTENSION BLUESEA	1,000	12V REFRESH ER POWER SUPPLY AT	ELECT DEM SERV CHARGE		
	4	973757	498080	1,000		ELECT DEM SERV CHARGE		224
	4	143033	COPPER BAR 25X5 2DBS VT L115	1,000	12V REFRESH ER POWER SUPPLY AT	ELECT DEM SERV CHARGE		
	4	143033	COPPER BAR 25X5 2DBS VT L115	1,000	12V REFRESH ER POWER SUPPLY AT	ELECT DEM SERV CHARGE		
	4	143033	COPPER BAR 25X5 2DBS VT L115	1,000	12V REFRESH ER POWER SUPPLY AT	ELECT DEM SERV CHARGE		
	5	973759	SUPPORT FUSE MIDIFUSE	1,000		ELECT DEM SERV CHARGE		224
	5	953713	STICKER HIGH VOLTAGE	1,000	12V REFRESH ER POWER SUPPLY AT	ELECT DEM SERV CHARGE		
	5	953713	STICKER HIGH VOLTAGE	1,000	12V REFRESH ER POWER SUPPLY AT	ELECT DEM SERV CHARGE		
	5	953713	STICKER HIGH VOLTAGE	1,000	12V REFRESH ER POWER SUPPLY AT	ELECT DEM SERV CHARGE		
	6	063884	ELECTRONIC BATTERY ISOLATOR (MOS 150A)	1,000		ELECT DEM SERV CHARGE		211
	6	127212	EARTHING PLATE PM2 MM NM	1,000	12V REFRESH ER POWER SUPPLY AT	ELECT DEM SERV CHARGE		

ENGINE ELECTRICAL UNITS

option	Pos.	Part No.	Description	Quant. per boat	Version / Option	SS_FAM	Beginning hull number	Ending hull number
	6	127212	EARTHING PLATE PM2 MM NM	1,000	12V REFRESH ER POWER SUPPLY AT	ELECT DEM SERV CHARGE		
	6	127212	EARTHING PLATE PM2 MM NM	1,000	12V REFRESH ER POWER SUPPLY AT	ELECT DEM SERV CHARGE		
	7	891800	PVC TUBE DIA 40X33	,050	12V REFRESH ER POWER SUPPLY AT	ELECT DEM SERV CHARGE		
	7	891800	PVC TUBE DIA 40X33	,050	12V REFRESH ER POWER SUPPLY AT	ELECT DEM SERV CHARGE		
	7	891800	PVC TUBE DIA 40X33	,050	12V REFRESH ER POWER SUPPLY AT	ELECT DEM SERV CHARGE		
	8	252034	BATTERY 12V 70A AGM P600	1,000		ELECT DEM SERV CHARGE		211
	8	511508	HARNESS OC3MC OPT CONV 2KVA 12VDC AC	1,000	12V REFRESH ER POWER SUPPLY AT	ELECT DEM SERV CHARGE		
	8	511508	HARNESS OC3MC OPT CONV 2KVA 12VDC AC	1,000	12V REFRESH ER POWER SUPPLY AT	ELECT DEM SERV CHARGE		
	8	511508	HARNESS OC3MC OPT CONV 2KVA 12VDC AC	1,000	12V REFRESH ER POWER SUPPLY AT	ELECT DEM SERV CHARGE		
	9	151392	BATTERY TERMINAL +D10 HELLA	1,000		ELECT DEM SERV CHARGE		211
	9	191247	CONVECTOR BOX 32A 1V IB PHO	1,000	12V REFRESH ER POWER SUPPLY AT	ELECT DEM SERV CHARGE		

ENGINE ELECTRICAL UNITS

option	Pos.	Part No.	Description	Quant. per boat	Version / Option	SS_FAM	Beginning hull number	Ending hull number
	9	191247	CONVECTOR BOX 32A 1V IB PHO	1,000	12V REFRESH ER POWER SUPPLY AT	ELECT DEM SERV CHARGE		
	9	191247	CONVECTOR BOX 32A 1V IB PHO	1,000	12V REFRESH ER POWER SUPPLY AT	ELECT DEM SERV CHARGE		
	10	171226	BATTERY TERMINAL CAP RED	1,000		ELECT DEM SERV CHARGE		211
	10	171226	BATTERY TERMINAL CAP RED	1,000		ELECT DEM SERV CHARGE		
	10	162294	LABEL STD EL BREAKER	1,000	12V REFRESH ER POWER SUPPLY AT	ELECT DEM SERV CHARGE		
	10	162294	LABEL STD EL BREAKER	1,000	12V REFRESH ER POWER SUPPLY AT	ELECT DEM SERV CHARGE		
	10	162294	LABEL STD EL BREAKER	1,000	12V REFRESH ER POWER SUPPLY AT	ELECT DEM SERV CHARGE		
	11	151432	BATTERY TERMINAL -D10 HELLA	1,000		ELECT DEM SERV CHARGE		211
	11	151432	BATTERY TERMINAL -D10 HELLA	1,000		ELECT DEM SERV CHARGE		
	11	190485	DERIVATION BOX SCHEIBER V8	1,000	12V REFRESH ER POWER SUPPLY AT	ELECT DEM SERV CHARGE		
	11	190485	DERIVATION BOX SCHEIBER V8	1,000	12V REFRESH ER POWER SUPPLY AT	ELECT DEM SERV CHARGE		
	11	190485	DERIVATION BOX SCHEIBER V8	1,000	12V REFRESH ER POWER SUPPLY AT	ELECT DEM SERV CHARGE		
	12	171225	BATTERY TERMINAL CAP BLACK	1,000		ELECT DEM SERV CHARGE		211

ENGINE ELECTRICAL UNITS

option	Pos.	Part No.	Description	Quant. per boat	Version / Option	SS_FAM	Beginning hull number	Ending hull number
	12	171225	BATTERY TERMINAL CAP BLACK	1,000		ELECT DEM SERV CHARGE		
	12	191183	CABLE CAN SCHEIBER OR 0_4M	1,000	12V REFRESH ER POWER SUPPLY AT	ELECT DEM SERV CHARGE		
	12	191183	CABLE CAN SCHEIBER OR 0_4M	1,000	12V REFRESH ER POWER SUPPLY AT	ELECT DEM SERV CHARGE		
	12	191183	CABLE CAN SCHEIBER OR 0_4M	1,000	12V REFRESH ER POWER SUPPLY AT	ELECT DEM SERV CHARGE		
	13	157560	LABEL STD EL BATTERY 12V MOTOR	1,000		ELECT DEM SERV CHARGE		211
	13	167628	LABEL RISK OF CONVERTER	1,000	12V REFRESH ER POWER SUPPLY AT	ELECT DEM SERV CHARGE		
	13	167628	LABEL RISK OF CONVERTER	1,000	12V REFRESH ER POWER SUPPLY AT	ELECT DEM SERV CHARGE		
	13	167628	LABEL RISK OF CONVERTER	1,000	12V REFRESH ER POWER SUPPLY AT	ELECT DEM SERV CHARGE		
	14	154377	BLACK WEBBING STRAP L 800X320X4	2,000		ELECT DEM SERV CHARGE		211
	14	195518	ELECTRIC PANEL CONV MASTER	1,000	12V REFRESH ER POWER SUPPLY AT	ELECT DEM SERV CHARGE		
	14	195518	ELECTRIC PANEL CONV MASTER	1,000	12V REFRESH ER POWER SUPPLY AT	ELECT DEM SERV CHARGE		

ENGINE ELECTRICAL UNITS

option	Pos.	Part No.	Description	Quant. per boat	Version / Option	SS_FAM	Begining hull number	Ending hull number
	14	195518	ELECTRIC PANEL CONV MASTER	1,000	12V REFRESH ER POWER SUPPLY AT	ELECT DEM SERV CHARGE		
	15	252024	LABEL BATTERY AGM	1,000		ELECT DEM SERV CHARGE		211
	15	153796	POWER CORD RJ12 MAST STRAIGHT 10M CONVER	1,000	12V REFRESH ER POWER SUPPLY AT	ELECT DEM SERV CHARGE		
	15	153796	POWER CORD RJ12 MAST STRAIGHT 10M CONVER	1,000	12V REFRESH ER POWER SUPPLY AT	ELECT DEM SERV CHARGE		
	15	153796	POWER CORD RJ12 MAST STRAIGHT 10M CONVER	1,000	12V REFRESH ER POWER SUPPLY AT	ELECT DEM SERV CHARGE		
	16	400323	STARBOARD STOPING PART L-135 M	2,000		ELECT DEM SERV CHARGE		211
	16	400323	STARBOARD STOPING PART L-135 M	2,000		ELECT DEM SERV CHARGE		
	16	502396	BLACHOWKRET ISO 14585 DIN 7981	4,000	12V REFRESH ER POWER SUPPLY AT	ELECT DEM SERV CHARGE		
	16	502396	BLACHOWKRET ISO 14585 DIN 7981	4,000	12V REFRESH ER POWER SUPPLY AT	ELECT DEM SERV CHARGE		
	16	224156	BREAKER DIFF A32 30MA 1MOD TONG	1,000	12V REFRESH ER POWER SUPPLY AT	ELECT DEM SERV CHARGE	132	
	17	216629	BATTERY 12V 100AH AGM EM960	1,000		ELECT DEM SERV CHARGE		
	17	989839	VIS TOLE IN.A4 TX 4,2X16	8,000	12V REFRESH ER POWER SUPPLY AT	ELECT DEM SERV CHARGE		

ENGINE ELECTRICAL UNITS

option	Pos.	Part No.	Description	Quant. per boat	Version / Option	SS_FAM	Begining hull number	Ending hull number
	17	989839	VIS TOLE IN.A4 TX 4,2X16	8,000	12V REFRESH ER POWER SUPPLY AT	ELECT DEM SERV CHARGE		
	18	157557	LABEL STD EL BATTERY 12V	1,000		ELECT DEM SERV CHARGE		
	18	165364	S S SELF TAP SCREW A4 TCBTX 4_8X 15_9	6,000	12V REFRESH ER POWER SUPPLY AT	ELECT DEM SERV CHARGE		
	18	165364	S S SELF TAP SCREW A4 TCBTX 4_8X 15_9	6,000	12V REFRESH ER POWER SUPPLY AT	ELECT DEM SERV CHARGE		
	19	143790	BATTERY TERMINAL FUSE 300A LF	2,000		ELECT DEM SERV CHARGE		224
	19	143790	BATTERY TERMINAL FUSE 300A LF	1,000		ELECT DEM SERV CHARGE	225	
	19	501099	SCREW DIN 7981 INOX TX10 2 9X9,5	2,000	12V REFRESH ER POWER SUPPLY AT	ELECT DEM SERV CHARGE		
	19	501099	SCREW DIN 7981 INOX TX10 2 9X9,5	2,000	12V REFRESH ER POWER SUPPLY AT	ELECT DEM SERV CHARGE		
	20	076829	NYL.WASHER	2,000		ELECT DEM SERV CHARGE		
	20	171226	BATTERY TERMINAL CAP RED	3,000	12V REFRESH ER POWER SUPPLY AT	ELECT DEM SERV CHARGE		
	20	954119	STAINLESS STEEL SELF TAPP	4,000	12V REFRESH ER POWER SUPPLY AT	ELECT DEM SERV CHARGE		
	20	171226	BATTERY TERMINAL CAP RED	3,000	12V REFRESH ER POWER SUPPLY AT	ELECT DEM SERV CHARGE		

ENGINE ELECTRICAL UNITS

option	Pos.	Part No.	Description	Quant. per boat	Version / Option	SS_FAM	Begining hull number	Ending hull number
	20	954119	STAINLESS STEEL SELF TAPP	4,000	12V REFRESH ER POWER SUPPLY AT	ELECT DEM SERV CHARGE		
	20	171226	BATTERY TERMINAL CAP RED	3,000	12V REFRESH ER POWER SUPPLY AT	ELECT DEM SERV CHARGE		
	21	151432	BATTERY TERMINAL -D10 HELLA	3,000	12V REFRESH ER POWER SUPPLY AT	ELECT DEM SERV CHARGE		
	21	151432	BATTERY TERMINAL -D10 HELLA	3,000	12V REFRESH ER POWER SUPPLY AT	ELECT DEM SERV CHARGE		
	21	224156	BREAKER DIFF A32 30MA 1MOD TONG	1,000	12V REFRESH ER POWER SUPPLY AT	ELECT DEM SERV CHARGE	132	
	21	151432	BATTERY TERMINAL -D10 HELLA	3,000	12V REFRESH ER POWER SUPPLY AT	ELECT DEM SERV CHARGE		
	22	062948	BUS BAR 20X10 L1000 M8	,250		ELECT DEM SERV CHARGE		
	22	171225	BATTERY TERMINAL CAP BLACK	3,000	12V REFRESH ER POWER SUPPLY AT	ELECT DEM SERV CHARGE		
	22	171225	BATTERY TERMINAL CAP BLACK	3,000	12V REFRESH ER POWER SUPPLY AT	ELECT DEM SERV CHARGE		
	22	171225	BATTERY TERMINAL CAP BLACK	3,000	12V REFRESH ER POWER SUPPLY AT	ELECT DEM SERV CHARGE		
	23	062949	COPPER BAR ISOLATOR 32X5 M8	2,000		ELECT DEM SERV CHARGE		224

ENGINE ELECTRICAL UNITS

option	Pos.	Part No.	Description	Quant. per boat	Version / Option	SS_FAM	Beginning hull number	Ending hull number
	23	154377	BLACK WEBBING STRAP L 800X320X4	6,000	12V REFRESH ER POWER SUPPLY AT	ELECT DEM SERV CHARGE		
	23	154377	BLACK WEBBING STRAP L 800X320X4	6,000	12V REFRESH ER POWER SUPPLY AT	ELECT DEM SERV CHARGE		
	23	154377	BLACK WEBBING STRAP L 800X320X4	6,000	12V REFRESH ER POWER SUPPLY AT	ELECT DEM SERV CHARGE		
	24	193786	BATTERY 12V 90AH LITH FER PH	3,000	12V REFRESH ER POWER SUPPLY AT	ELECT DEM SERV CHARGE		183
	24	193786	BATTERY 12V 90AH LITH FER PH	3,000	12V REFRESH ER POWER SUPPLY AT	ELECT DEM SERV CHARGE		183
	24	193786	BATTERY 12V 90AH LITH FER PH	3,000	12V REFRESH ER POWER SUPPLY AT	ELECT DEM SERV CHARGE		183
	25	186242	HUBB 5V SCHEIBER	1,000	12V REFRESH ER POWER SUPPLY AT	ELECT DEM SERV CHARGE		183
	25	186242	HUBB 5V SCHEIBER	1,000	12V REFRESH ER POWER SUPPLY AT	ELECT DEM SERV CHARGE		183
	25	186242	HUBB 5V SCHEIBER	1,000	12V REFRESH ER POWER SUPPLY AT	ELECT DEM SERV CHARGE		183
	26	196172	HUBB CAN-CAN BATT SB	1,000	12V REFRESH ER POWER SUPPLY AT	ELECT DEM SERV CHARGE		

ENGINE ELECTRICAL UNITS

option	Pos.	Part No.	Description	Quant. per boat	Version / Option	SS_FAM	Beginning hull number	Ending hull number
	26	196172	HUBB CAN-CAN BATT SB	1,000	12V REFRESH ER POWER SUPPLY AT	ELECT DEM SERV CHARGE		
	26	196172	HUBB CAN-CAN BATT SB	1,000	12V REFRESH ER POWER SUPPLY AT	ELECT DEM SERV CHARGE		
	27	157557	LABEL STD EL BATTERY 12V	1,000	12V REFRESH ER POWER SUPPLY AT	ELECT DEM SERV CHARGE		
	27	157557	LABEL STD EL BATTERY 12V	1,000	12V REFRESH ER POWER SUPPLY AT	ELECT DEM SERV CHARGE		
	27	157557	LABEL STD EL BATTERY 12V	1,000	12V REFRESH ER POWER SUPPLY AT	ELECT DEM SERV CHARGE		
	28	163173	ISOLATOR 180A 1E-3S EL	1,000	12V REFRESH ER POWER SUPPLY AT	ELECT DEM SERV CHARGE		
	28	163173	ISOLATOR 180A 1E-3S EL	1,000	12V REFRESH ER POWER SUPPLY AT	ELECT DEM SERV CHARGE		
	28	163173	ISOLATOR 180A 1E-3S EL	1,000	12V REFRESH ER POWER SUPPLY AT	ELECT DEM SERV CHARGE		
	29	143790	BATTERY TERMINAL FUSE 300A LF	4,000	12V REFRESH ER POWER SUPPLY AT	ELECT DEM SERV CHARGE		
	29	143790	BATTERY TERMINAL FUSE 300A LF	4,000	12V REFRESH ER POWER SUPPLY AT	ELECT DEM SERV CHARGE		

ENGINE ELECTRICAL UNITS

option	Pos.	Part No.	Description	Quant. per boat	Version / Option	SS_FAM	Beginning hull number	Ending hull number
	29	143790	BATTERY TERMINAL FUSE 300A LF	4,000	12V REFRESH ER POWER SUPPLY AT	ELECT DEM SERV CHARGE		
	30	062168	BATTERY TERMINAL FUSE HOLDER DOUBLE	3,000	12V REFRESH ER POWER SUPPLY AT	ELECT DEM SERV CHARGE		
	30	062168	BATTERY TERMINAL FUSE HOLDER DOUBLE	3,000	12V REFRESH ER POWER SUPPLY AT	ELECT DEM SERV CHARGE		
	30	062168	BATTERY TERMINAL FUSE HOLDER DOUBLE	3,000	12V REFRESH ER POWER SUPPLY AT	ELECT DEM SERV CHARGE		
	31	400323	STARBOARD STOPING PART L-135 M	6,000	12V REFRESH ER POWER SUPPLY AT	ELECT DEM SERV CHARGE		
	31	400323	STARBOARD STOPING PART L-135 M	6,000	12V REFRESH ER POWER SUPPLY AT	ELECT DEM SERV CHARGE		
	31	400323	STARBOARD STOPING PART L-135 M	6,000	12V REFRESH ER POWER SUPPLY AT	ELECT DEM SERV CHARGE		
	32	400324	STARBOARD STOPING PART L-225 M	6,000	12V REFRESH ER POWER SUPPLY AT	ELECT DEM SERV CHARGE		
	32	400324	STARBOARD STOPING PART L-225 M	6,000	12V REFRESH ER POWER SUPPLY AT	ELECT DEM SERV CHARGE		
	32	400324	STARBOARD STOPING PART L-225 M	6,000	12V REFRESH ER POWER SUPPLY AT	ELECT DEM SERV CHARGE		

ENGINE ELECTRICAL UNITS

option	Pos.	Part No.	Description	Quant. per boat	Version / Option	SS_FAM	Begining hull number	Ending hull number
	33	255951	BATTERY SEPARATOR 12V MDP 80A 1E N3	3,000	12V REFRESH ER POWER SUPPLY AT	ELECT DEM SERV CHARGE		224
	33	255951	BATTERY SEPARATOR 12V MDP 80A 1E N3	3,000	12V REFRESH ER POWER SUPPLY AT	ELECT DEM SERV CHARGE		224
	33	255951	BATTERY SEPARATOR 12V MDP 80A 1E N3	3,000	12V REFRESH ER POWER SUPPLY AT	ELECT DEM SERV CHARGE		224
	34	203848	BATTERY CHARGER 12V 60A 110 230 YPV8-1	1,000	12V REFRESH ER POWER SUPPLY AT	ELECT DEM SERV CHARGE		180
	34	223311	BATTERY CHARGER 12V 60A BT YOPPC 3S	1,000	12V REFRESH ER POWER SUPPLY AT	ELECT DEM SERV CHARGE	181	
	34	203848	BATTERY CHARGER 12V 60A 110 230 YPV8-1	1,000	12V REFRESH ER POWER SUPPLY AT	ELECT DEM SERV CHARGE		180
	34	223311	BATTERY CHARGER 12V 60A BT YOPPC 3S	1,000	12V REFRESH ER POWER SUPPLY AT	ELECT DEM SERV CHARGE	181	
	34	203848	BATTERY CHARGER 12V 60A 110 230 YPV8-1	1,000	12V REFRESH ER POWER SUPPLY AT	ELECT DEM SERV CHARGE		180
	34	223311	BATTERY CHARGER 12V 60A BT YOPPC 3S	1,000	12V REFRESH ER POWER SUPPLY AT	ELECT DEM SERV CHARGE	181	