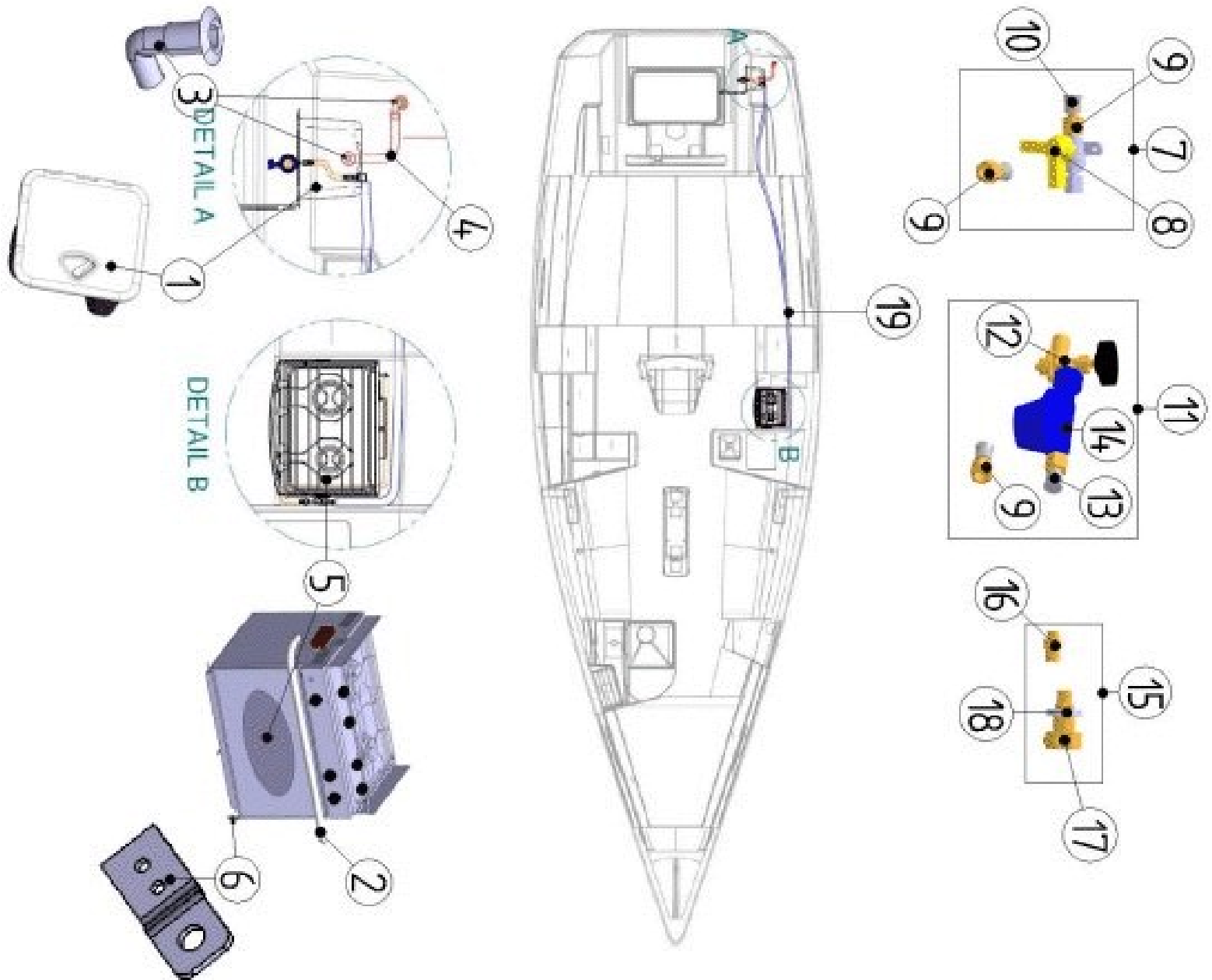


PROPANE GAS CIRCUIT



PROPANE GAS CIRCUIT

option	Pos.	Part No.	Description	Quant. per boat	Version / Option	SS_FAM	Beginning hull number	Ending hull number
	1	905197	BOX GAS SF3200	1,000				
	2	066847	BAR L730 STOVE PROTECTION TITANIUM	1,000				
	3	061351	THRU HULL CD90 CAN 25 PLAST	2,000				
	4	T09000100	HOSE 25 L 1_00 AMORVIN	1,000				
	5	902792	STOVE+OVEN ENO 2B STD-BA CE07	1,000				
	5	148889	THERMOCOUPLEUR ENO BURNER	1,000				
	5	148891	THERMOCOUPLEUR ENO STOVE	1,000				
	5	148997	PAN CLAMP STOVE RIGHT	1,000				
	5	148905	PAN CLAMP STOVE LEFT	1,000				
	5	148894	FLASH ELIMINATOR STOVE	1,000				
	5	053110	BURNER TOP PM/OVEN	1,000				
	5	053109	BURNER TOP GM/OVEN	1,000				
	5	071931	STOVE ENO SS 1B+UNIVERSAL JOINT	1,000				
	6	644100	GAS TAP STOP LUG	1,000				
	7	057871	FITTING KIT LPG L1500	1,000				
	7	159769	RUBBER THRU DECK FITTING DIA 13	1,000				
	8	057022	GAS TAP ENO (SET) (C E)	1,000				
	9	057024	RUBBER THRU DECK FITTING DIA 20	1,000				
	10	057026	RUBBER FLEX GAS L1500 ENO CO	1,000				
	11	057886	GAS KIT GAS BOTTLE FRENCH (C E) 30MB N1	1,000				
	12	049150	TAP GAS BOTTLE FRENCH	1,000				
	13	057341	GAS HOSE ENO L600 (SET) (C E)	1,000				
	14	049152	PRESSURE REDUCER GAS BOTTLE FRENCH	1,000				
	15	057880	KIT RAC.CUIVRE L 6000	1,000				
	16	057895	RAC PASSE CLOIS G1 4 GCHE SOUD	1,000				
	17	057896	RAC G1 4 GCHE A SOUDER	1,000				
	18	057893	UNION BRASS NUT M20X2_5	1,000				

PROPANE GAS CIRCUIT

option	Pos.	Part No.	Description	Quant. per boat	Version / Option	SS_FAM	Begining hull number	Ending hull number
	19	G03090520	CONDUIT PVC 25 L 5_20M	1,000				